

Operating Instructions (continued)

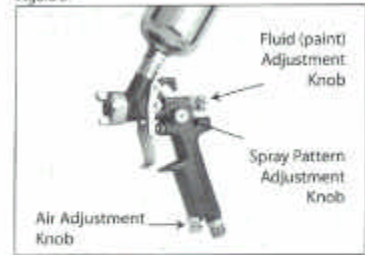
• ADJUSTMENT

1. Fine-tune the gun to your desired working settings of spray pattern, fluid output and degree of paint atomization using the 3 controls illustrated in Figure 5.

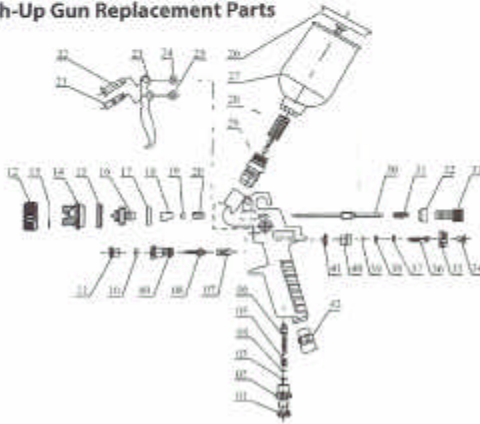
• Maintenance

To clean the gun, pour any leftover paint back into its container. Using thinner, clean out the paint cup and cap. Spray some thinner through the gun to clean the spray head, needle and nozzle. Spray until thinner comes out clean. Clean all paint passages as any paint left in the gun and allowed to dry could clog the spray head. Wipe the exterior of the gun with the cleaning brush included and a soft cloth moistened with thinner. If you remove the needle, remove the nozzle as well to protect the seat. NEVER DIG WITH A WIRE OR HARD OBJECT AT DRIED PAINT ON THE NEEDLE OR NOZZLE AS THIS CAN DAMAGE THE NEEDLE SEAT. Remove all such paint before it has a chance to dry.

Figure 5

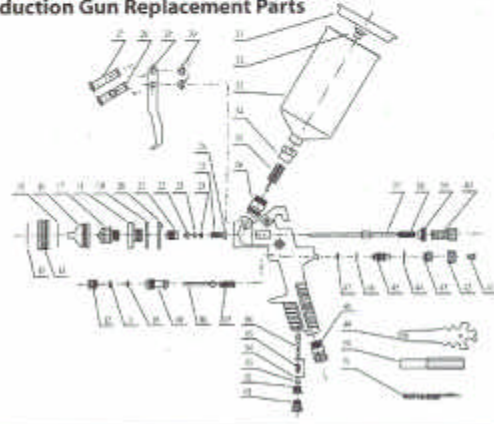


Touch-Up Gun Replacement Parts



1 Fluid Adj. Screw	25 Snap Retainer
2 Fluid Adj. Knob	26 Cup Cover
3 O-Ring	27 Cup
4 Washer	28 Filter
5 Air Valve Spring	29 Fluid Inlet Joint
6 Air Inlet Valve	30 Fluid Needle
7 Switch Spring	31 Fluid Needle Spring
8 Air Valve Body	32 Joint
9 Switch Knob	33 Paint Adj. Knob
10 Switch Washer	34 Phillips Screw
11 Lock Screw	35 Paint Adj. Joint
12 Nut	36 Pattern Adj. Screw
13 Air Cap Washer	37 O-Ring
14 Atomization	38 O-Ring
15 Nut Housing	39 Snap Retainer
16 Fluid Nozzle	40 Pattern Adj. Knob
17 Fluid Nozzle Washer	41 O-Ring
18 Bolt	42 Air Inlet Joint
19 Compressed Spring	
20 Needle Washer	
21 Trigger Lever 1	
22 Trigger Lever 2	
23 Trigger	
24 Snap Retainer	

Production Gun Replacement Parts



1 Air Adj. Screw	27 Trigger Lever 1
2 Air Adj. Knob	28 Trigger Lever 2
3 O-Ring	29 Trigger
4 Washer	30 Snap Retainer
5 Air Valve Spring	31 Ventilator Head
6 Air Inlet Valve	32 Cup Cover
7 Switch Spring	33 Cup
8 Air Valve Body	34 Filter
9 Switch Knob	35 Fluid Inlet Joint Washer
10 O-Ring	36 Fluid Inlet Joint
11 Pliable Washer	37 Fluid Adj. Needle
12 Direction Screw	38 Fluid Needle Spring
13 Spring	39 Joint
14 Nut	40 Fluid Adj. Knob
15 Fluid Cap Washer	41 Phillips Screw
16 Atomization	42 Pattern Adj. Knob
17 Fluid Nozzle	43 Pattern Adj. Lock Knob
18 Fluid Nozzle Joint	44 Washer
19 Joint Washer	45 Pattern Adj. Screw
20 Joint Washer	46 O-Ring
21 Direction Screw	47 Snap Retainer
22 Paint Needle Washer	48 Air Inlet Joint
23 Sealing Washer	49 Multi-Wrench
24 Small Gasket	50 Hex Wrench
25 Locking Spring	51 Brush
26 Gasket	

Customer service: 1-800-386-0191